

# Data Transfer Using HyperTerminal Program

The following are instructions for setting up HyperTerminal (Windows 2000 & XP) for transferring data from Scintrex Instruments:

From the Desk Top Select: START → Programs → Accessories → Communications → HyperTerminal

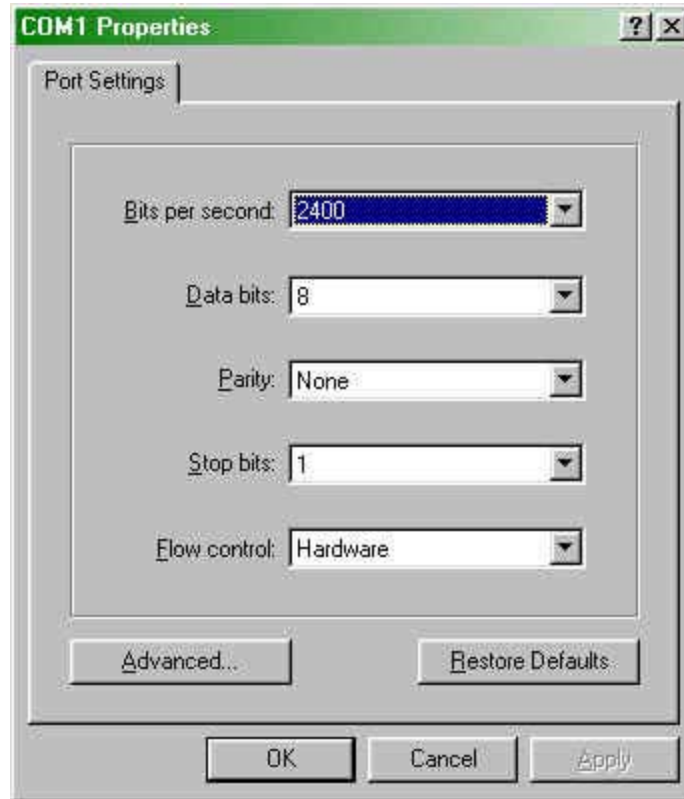
You will see a message asking you if you wish to set up a new connection. Give the Connection a name (i.e.: IPR-12, ENVI etc.) and click OK.



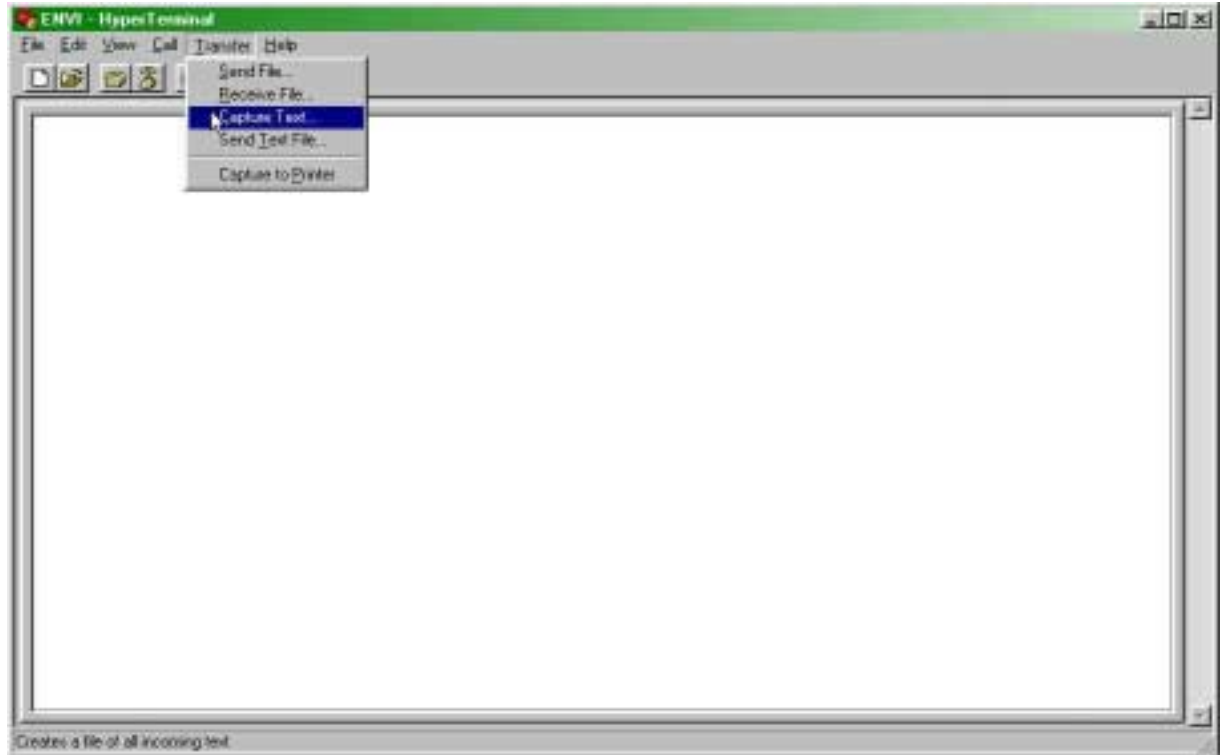
You will now see the CONNECT TO: Screen. Set the Connect Using parameter to COM1 (or whatever Com port you are using) and click OK.



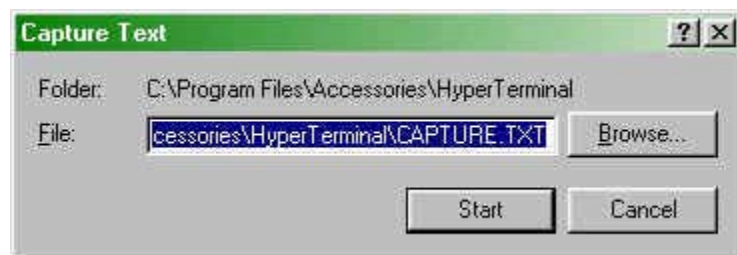
This should bring up the Port Setting menu. Set the parameters ( Baud rate, Data bits,, etc.) according to the required settings of the instrument that you are using. These can be found in the operations manual.



Once you have completed this set up, you should be back at the main HyperTerminal screen. Click on Transfer in the tool bar and select Capture Text.



Enter a file name for the data file and click START.



Once this is completed, the computer is waiting for the data transfer to begin. Using the instrument panel, set the unit as per the manual for downloading data. You should now see the data being transferred on the screen.